



A L E S E A

**An illustrative manual on
how to use and manage
Alessea applications**

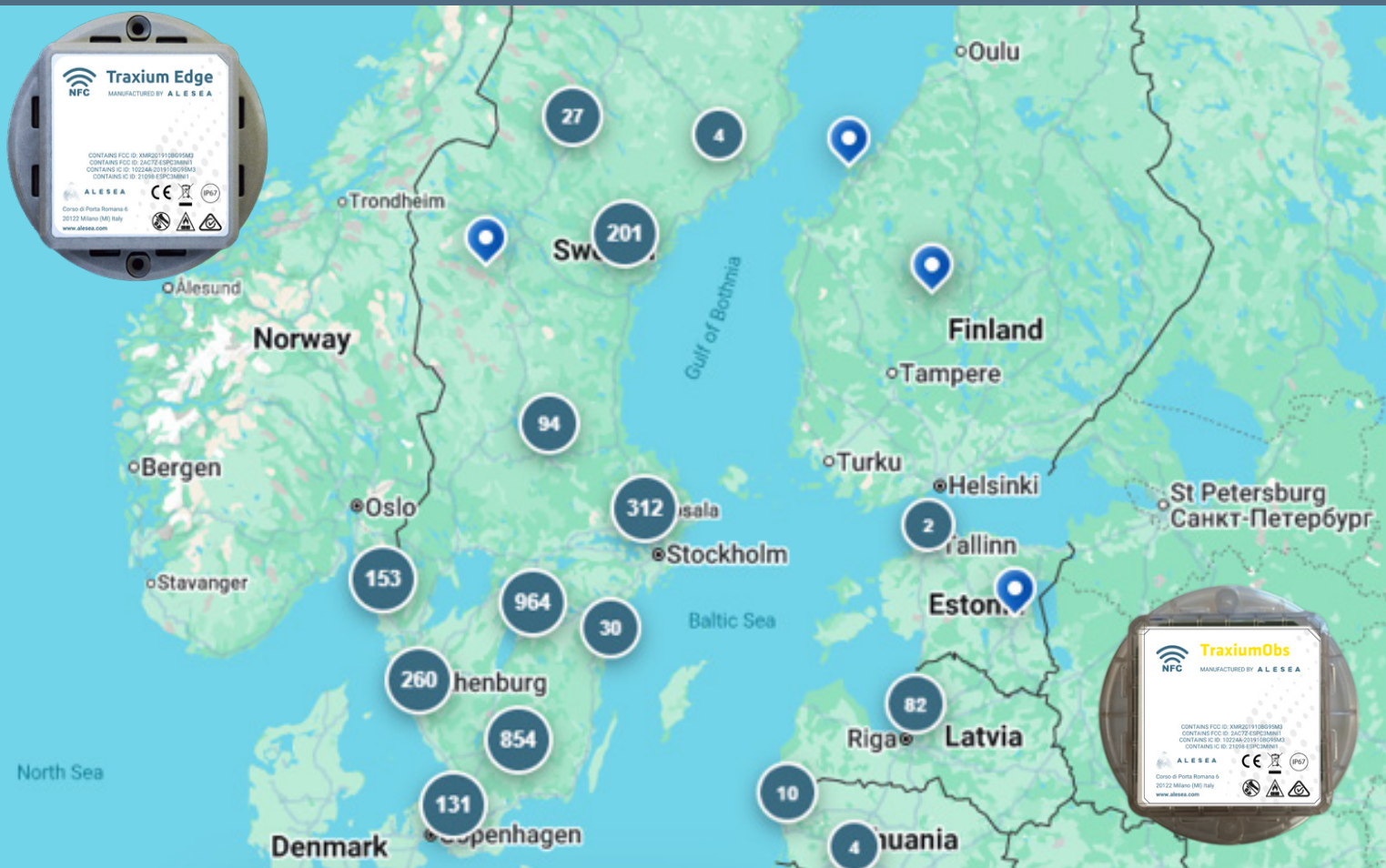
What is Alesea?

Every year, utilities and contractors lose millions to misplaced drums, wasted cable, and inefficient logistics. Once a cable drum leaves the factory, it effectively disappears. No one knows where it goes, how much cable remains, or when it needs to be returned.

Alesea changes that. With the Alesea IoT platform, you gain full real time visibility across the entire cable drum lifecycle, from factory dispatch to field installation, return, and reuse.

With over **140,000 connected devices** deployed and **more than 100 customers** across the world, Alesea is the proven platform for material management.

Whether as a standalone platform or integrated into your existing systems, Alesea combines real-time tracking, smart analytics, and field-ready tools to eliminate waste and put you in control of your cable assets.



Proven Results in Global Power Grid

Across global energy networks, Alesia is changing how cable drums and materials are managed. The platform drives measurable gains at every stage of the material lifecycle, including delivery tracking, inventory control, scrap management, and return logistics.

How Alesia improves the Power Grid

- **Delivery Tracking**
Track shipments with precise location visibility
- **Inventory Management**
Obtain full control of cable inventory across your network
- **Scrap Management**
Increase cable reuse and reduce material waste
- **Optimized Transport**
Coordinate and automate pick-ups

20%

Less Material Scrap

25%

Faster Material Cycle Time

90%

Fewer Material Losses

20%

Lower Material Inventory

10%

Reduced Transport Costs

Alesea solutions

Mobile App for Drum Readers

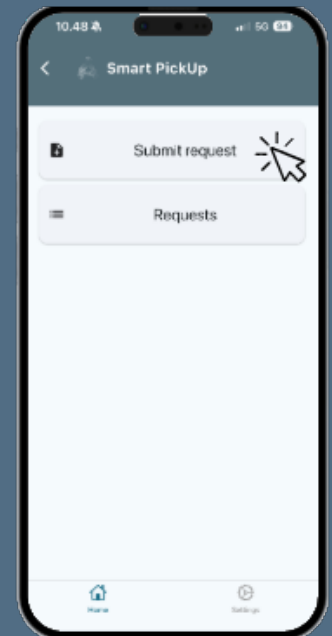
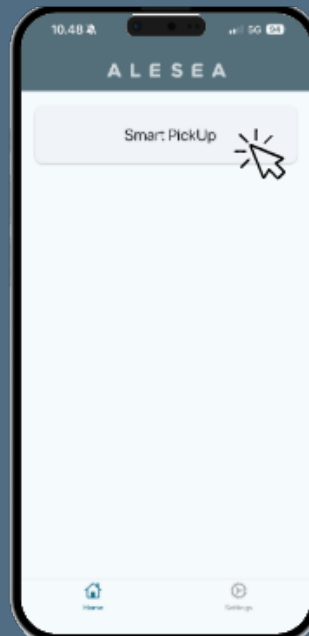
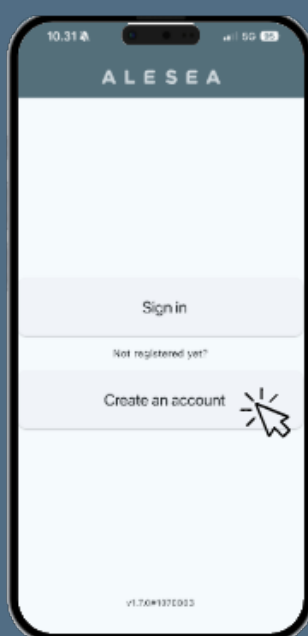
The Alesea Mobile App delivers real time drum intelligence straight to your field teams. Instantly identify any cable drum using NFC, see exactly what it contains and where it is located, and request a return pick up with a single tap. It is the fastest way to connect the field with your operations center.

Key features:

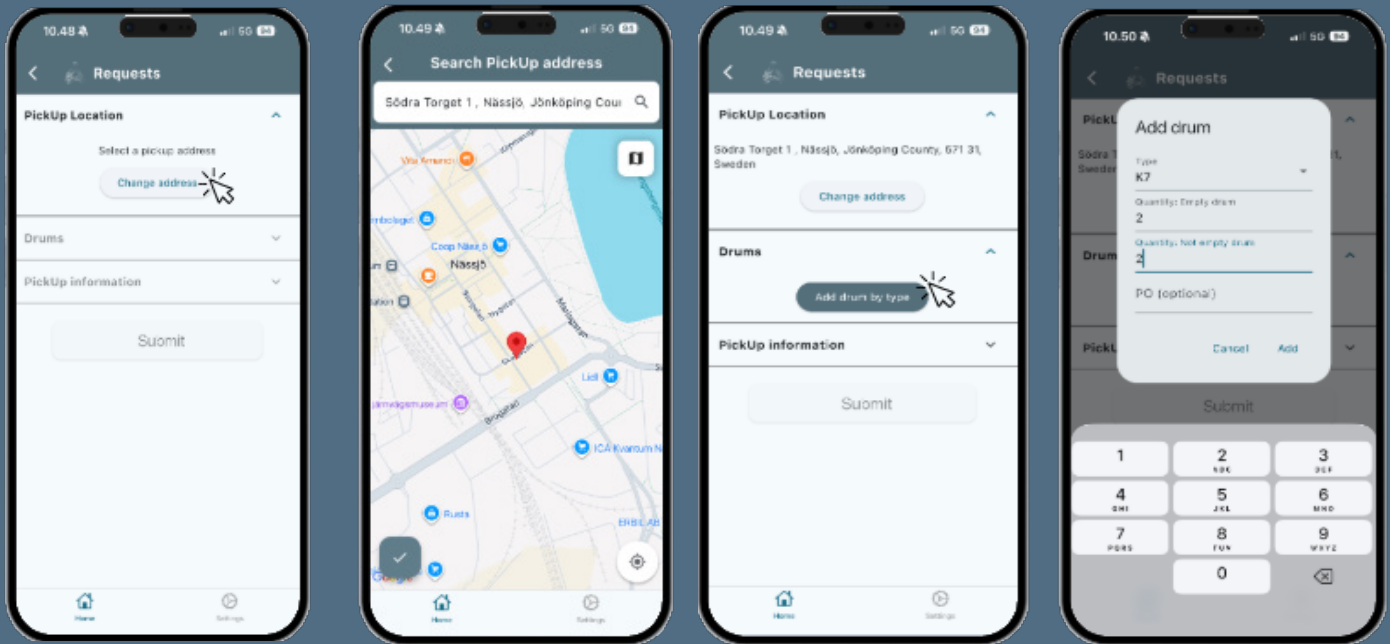
- One-tap drum return pick-up orders. **No calls, no paperwork**
- NFC-based cable identification linked to exact drum position on the map
- Instant access to operational data for field personnel. **Anytime, anywhere**
- Incident reporting and pick-up request tracking built in

How to use the App

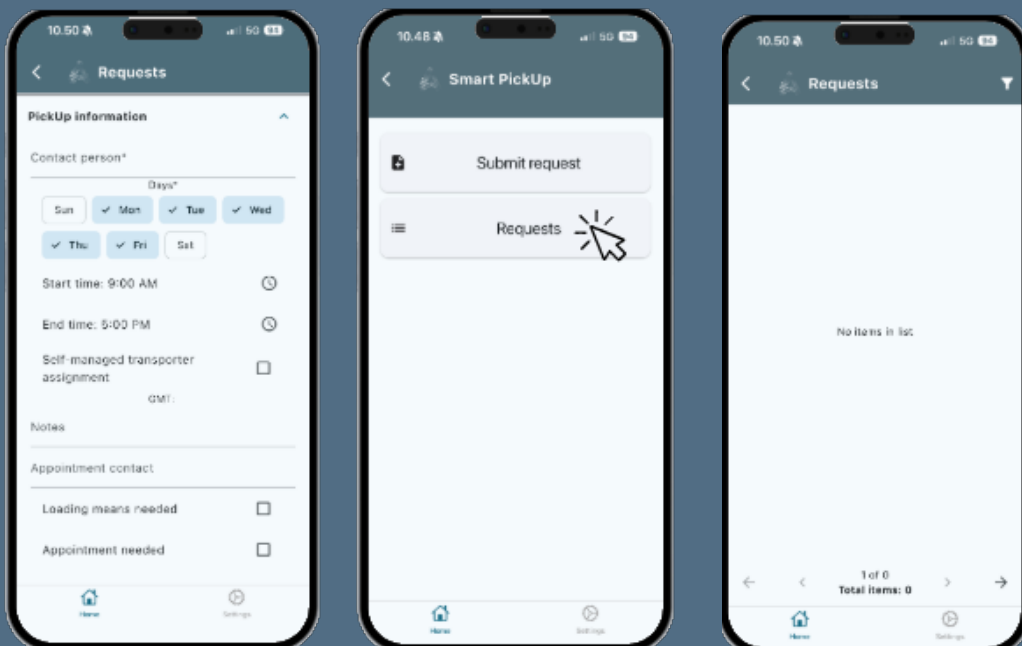
Start by clicking create an account in the Alesea Mobile App, register your user account and then click Smart PickUp. To request a pick-up, then click 'submit request'.



From there you click 'PickUp location' to set the address of pick-up. You can do it manually or access the map function. When you click 'drum', you will be able to add the specific type of drum, the quantity of drums to be picked up and so forth.



In the category 'PickUp information', you add the contact information of the person responsible for the drum(s) and their availability. After that you click 'submit' below. Once finished, you can access all your submitted requests via the 'request' button.



Alesea solutions

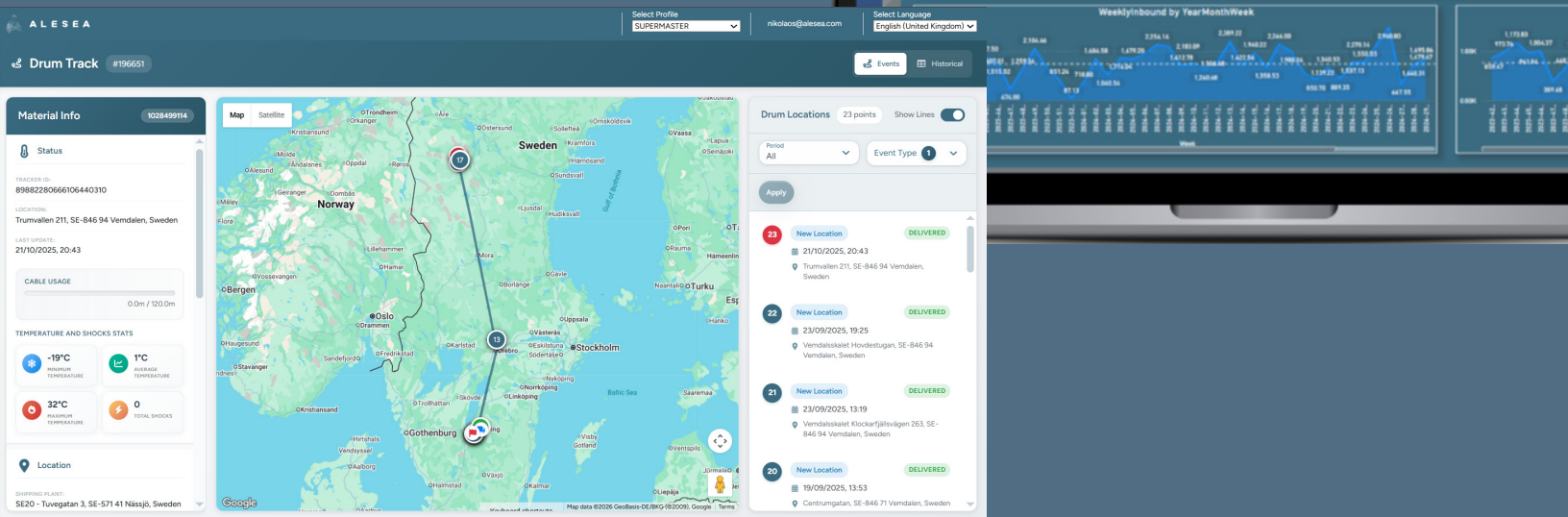
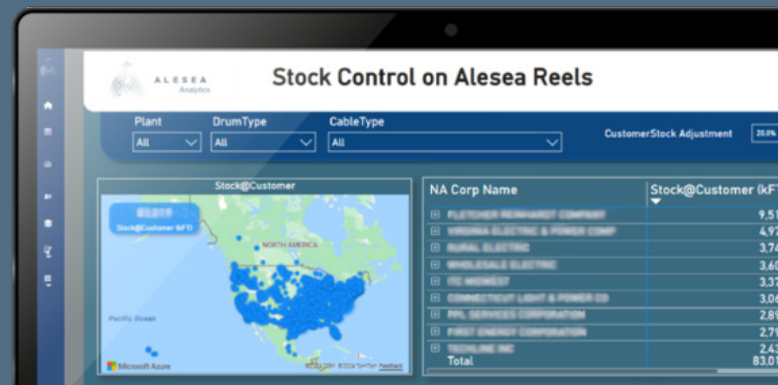
Web Portal for Cable Management

The Alesea Web Portal gives you full control of drum and cable operations from one centralized platform. Track every asset in real time, coordinate regional pick-ups, manage logistics flows, and ensure all stakeholders stay aligned. Designed as a subscription-based solution for administration and operations teams, the portal provides the strategic visibility needed to manage drum and cable activity across projects and locations.

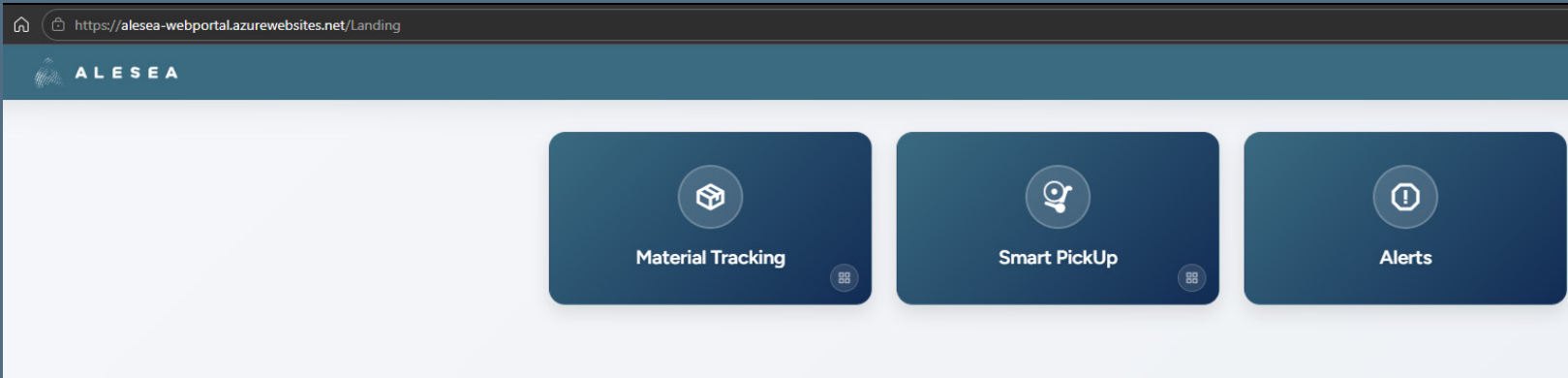
Key capabilities:

- Real-time asset tracking with full visibility of drum status, location, and cable levels
- Centralized pick-up management and logistics coordination
- Project-level monitoring and cross-site operational overview
- Integrations with existing business and logistics systems

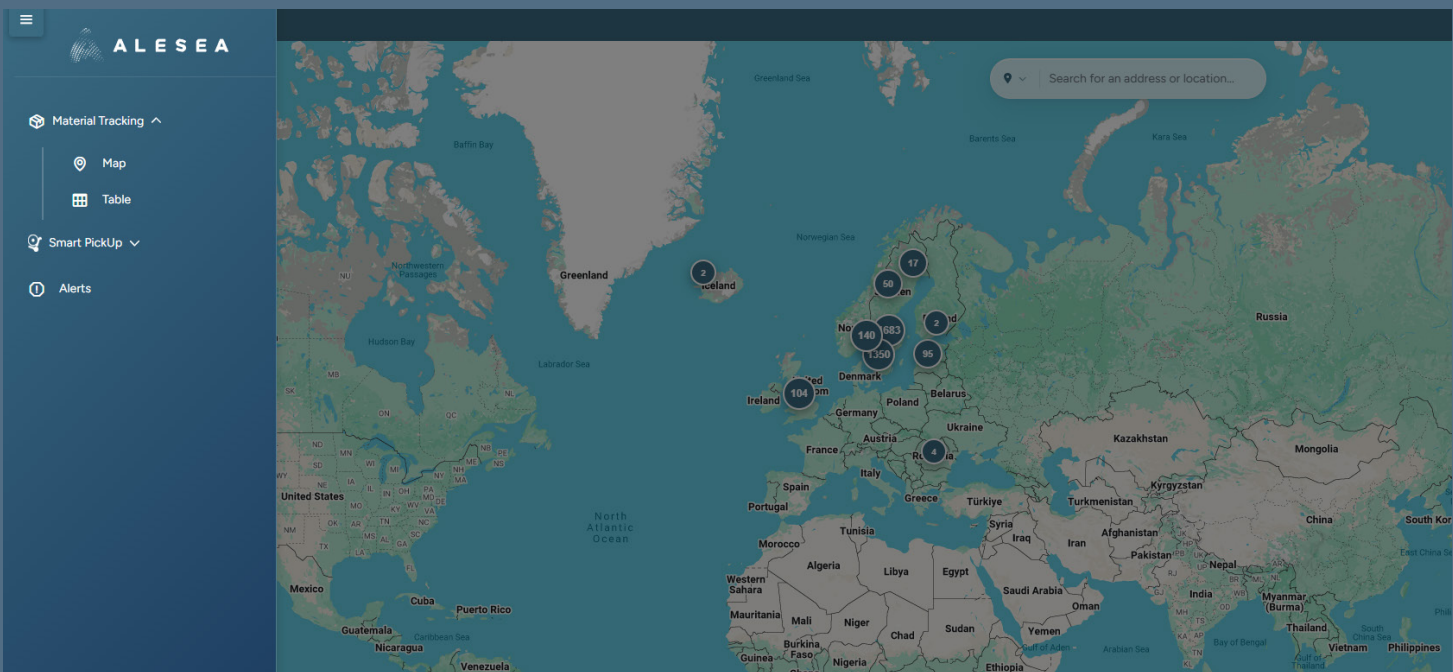
Expand as you grow: add automatic pick-up management, theft protection alerts, and advanced integrations as your operational complexity increases.



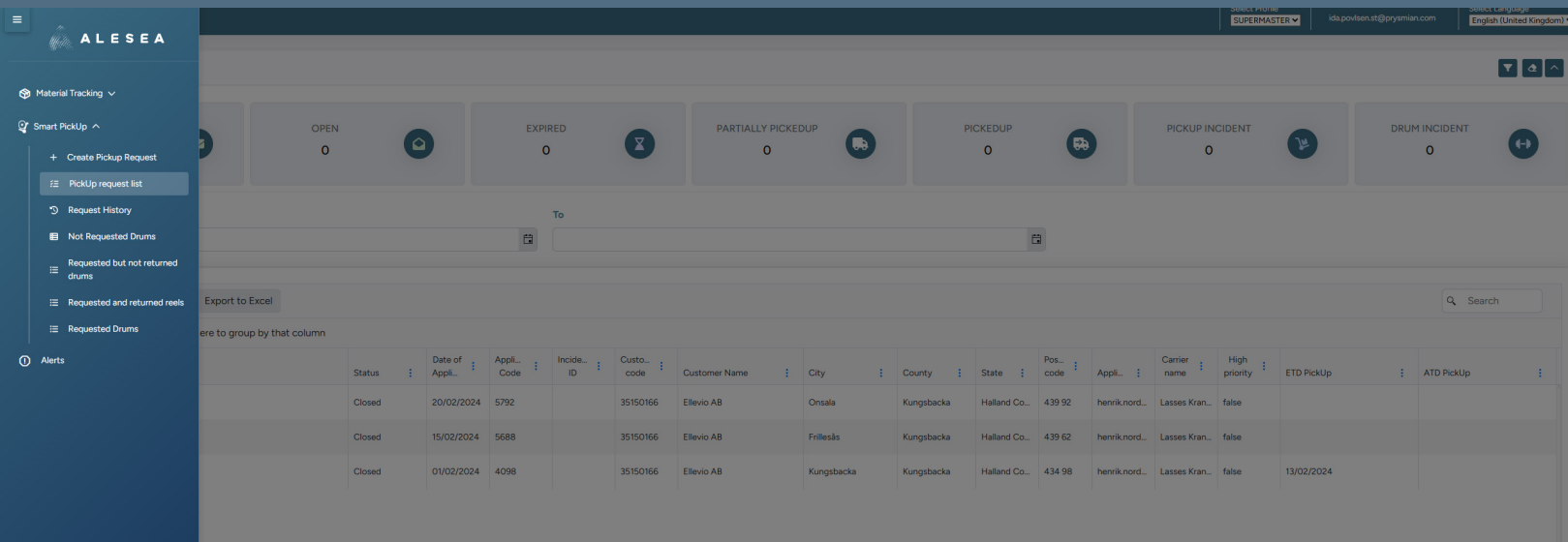
When accessing the Alesea Webplatform for the first time, the landing page will look like the image below.



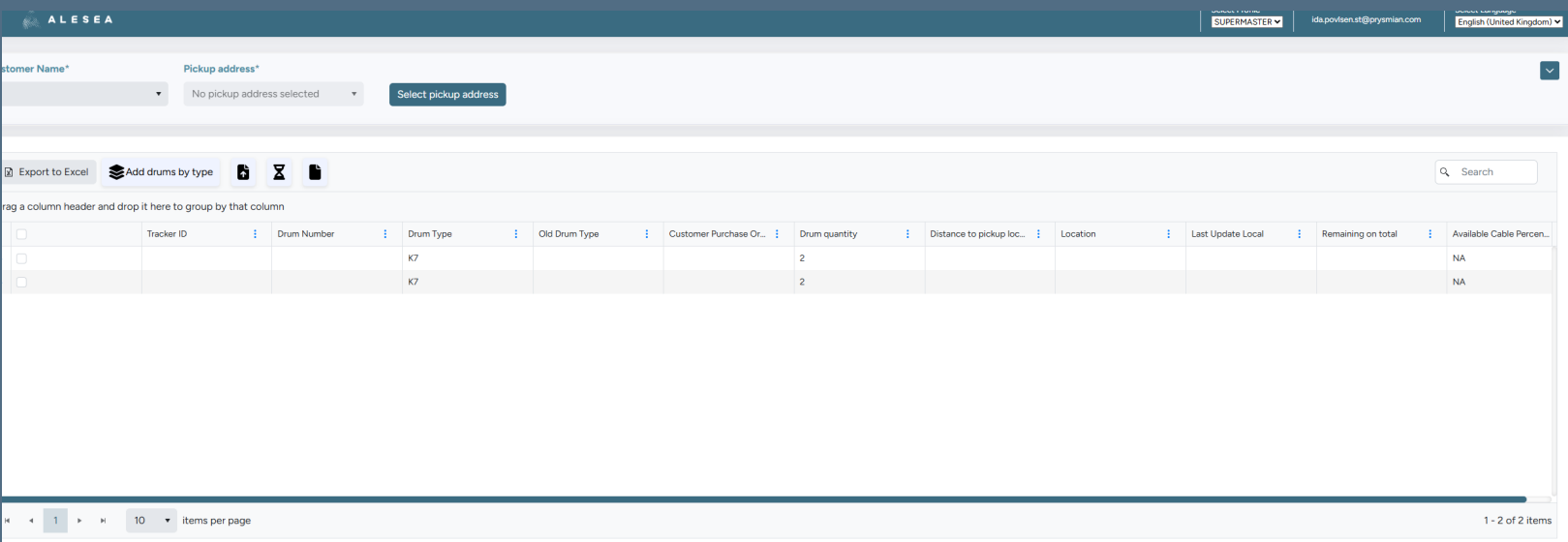
By clicking 'Material Tracking', you will be diverted to a world map with an overview of active assets. If you click in the menubar, you will be able to see the three operational options provided by Alesea. The 'Material Tracking' can also be changed into a table if preferred.



By clicking 'Smart PickUp', you will be diverted to a table with an overview of active assets. If you click in the menubar, you will be able to see the three operational options provided by Alesea. In the 'Smart PickUp' menubar, you have 7 options: create a Pickup Request, view the Pickup request list, view the Request History, see Non-Requested Drums, see Requested but Non-Returned drums, Requested AND Returned reels, and Requested Drums.



When accessing the 'create a PickUp Request', the landing page will look like the image below.



When scrolling down the 'PickUp Request' landing page, you will find the PickUp information section, which needs to be filled out. Both in terms of contact person and their availability.

Pickup information

Pickup information - Contact person*

Person to contact_Telephone Number

Pickup information - Days*

S M T W T F S

From 09:00 To 17:00

Europe/Copenhagen (GMT+02:00)

Pickup information - Notes

Pickup information - Special instructions

Pickup information - Appointment contact person

Person info for appointment

Pickup information - Loading means needed
 Appointment-based pickup information
 Default pickup information

[Remove PickUp request](#)
[Pickup request overview](#)
[+ Confirm PickUp request](#)

When accessing the menu bar and clicking 'Non-Requested Drums', you will be able to view the order numbers, delivery numbers and city, drum type, and filter the search of delivery date.

The same options are available in the 'Requested but not returned drums'-button, however displayed in a spread sheet manner. This same order also applies for the 'requested and returned reels'- and 'Requested Drum'-function as seen below.

Requested Drums

Drag a column header and drop it here to group by that column

Search Export to Excel

	Application C...	Customer code	Customer Na...	Drum ...	Actual Goods ...	Drum ...	Old D...	Standard pric...	Transportatio...	Drum incident	Pickup incident	Manual Drum L...	Is dec...	Remaining ca...	Remaining ca...	Status	Delivery Num...
<input type="checkbox"/>				DL10								x	x	14.84		CLOSED	
<input type="checkbox"/>				DL14								x	x	32.38		CLOSED	
<input type="checkbox"/>				K22								✓	✓	0	0	CLOSED	
<input type="checkbox"/>				K26								✓	✓	0	0	CLOSED	
<input type="checkbox"/>				DL10								x	x	0		CLOSED	
<input type="checkbox"/>				DL14								x	x	0		CLOSED	
<input type="checkbox"/>				K14								✓	✓	0	0	CLOSED	
<input type="checkbox"/>				K20								✓	✓	0	0	CLOSED	
<input type="checkbox"/>				DL10								✓	✓	0	0	CLOSED	

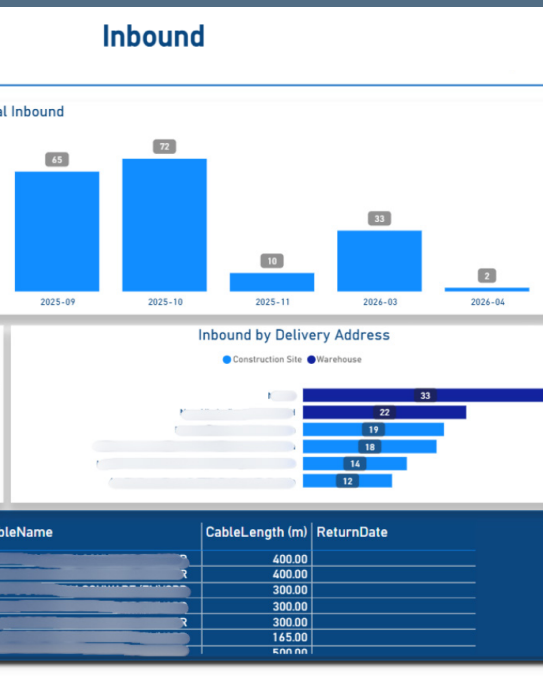
1 - 10 of 10 items

Alesea premium solutions

Business Intelligence Packages

Standard BI package

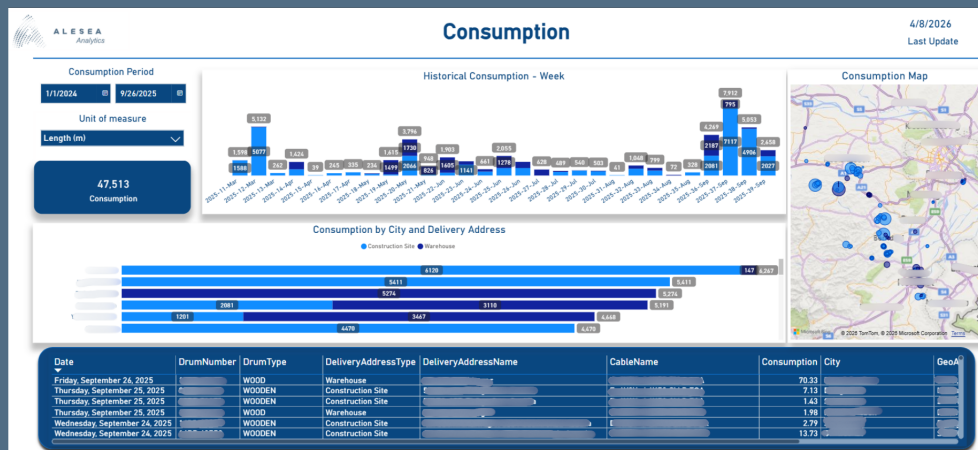
The Standard Power BI Package turns your operational data into clear, actionable dashboards. Track the KPIs that matter most, including drum cycle time, utilization rates, scrap, and transport efficiency, using standardized views designed for project teams and operations managers. Use it to benchmark performance across projects, support circularity and sustainability reporting, and build a data-driven foundation for smarter resource decisions.



What you get:

- Pre-built dashboards covering drum cycle time, utilization, scrap rates, and transport efficiency
- Operational benchmarking across projects and regions
- Built-in support for circularity and sustainability reporting

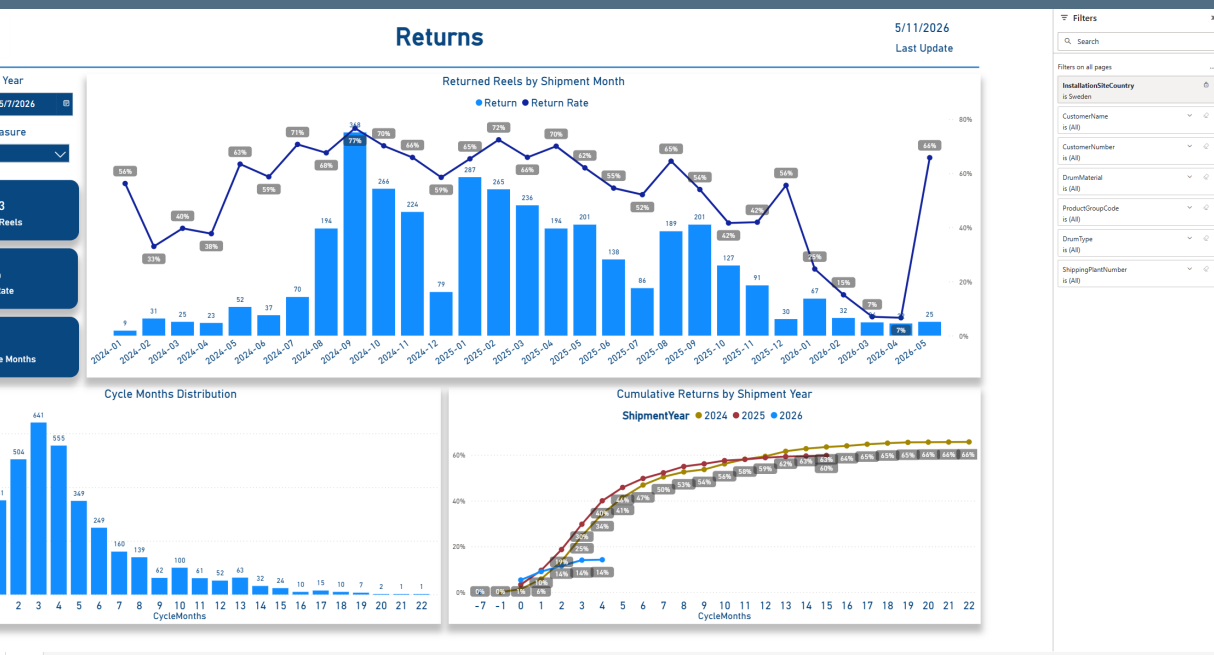
No custom setup required – start gaining operational insight from day one. This package provides a cost-effective foundation for data-driven decision-making and better resource utilization across your organization.



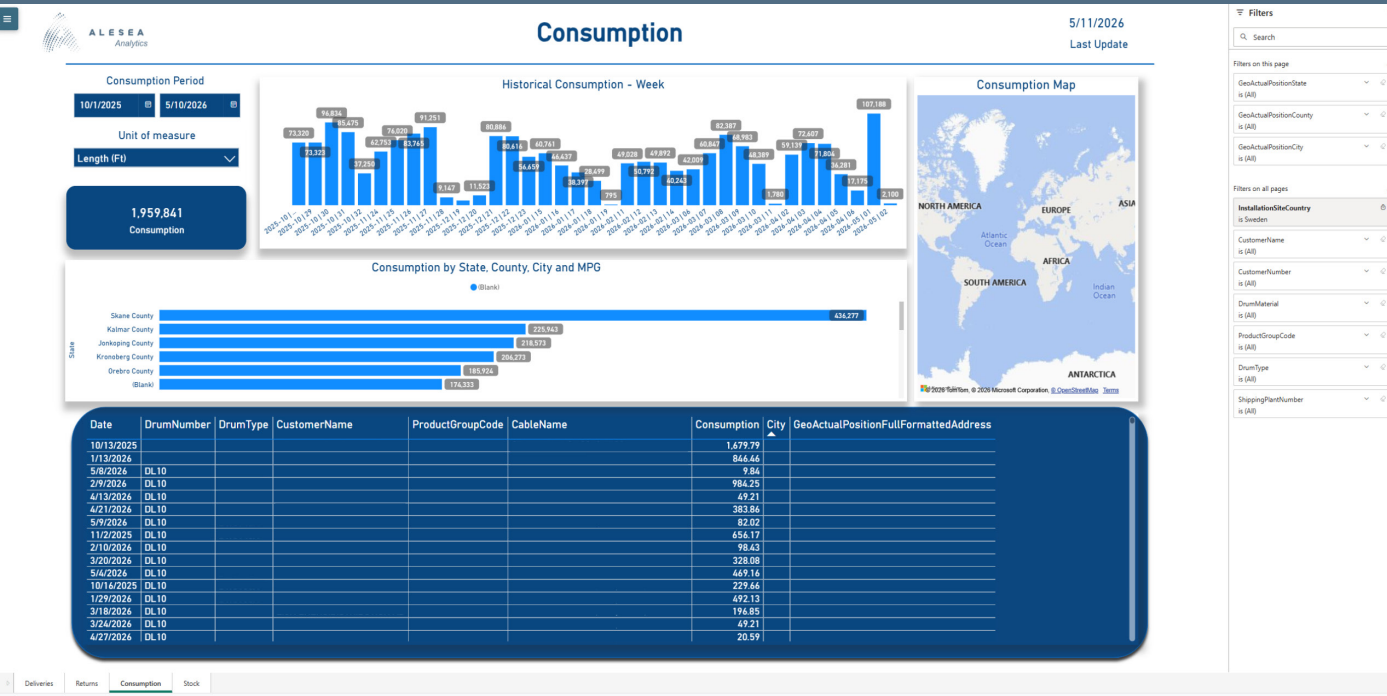
When accessing the BI WebPlatform package, the landing page will look like the image below and show deliveries. You can adjust the shipment period to view a shorter or longer period, and you are also able to change the unit of measure for your need.



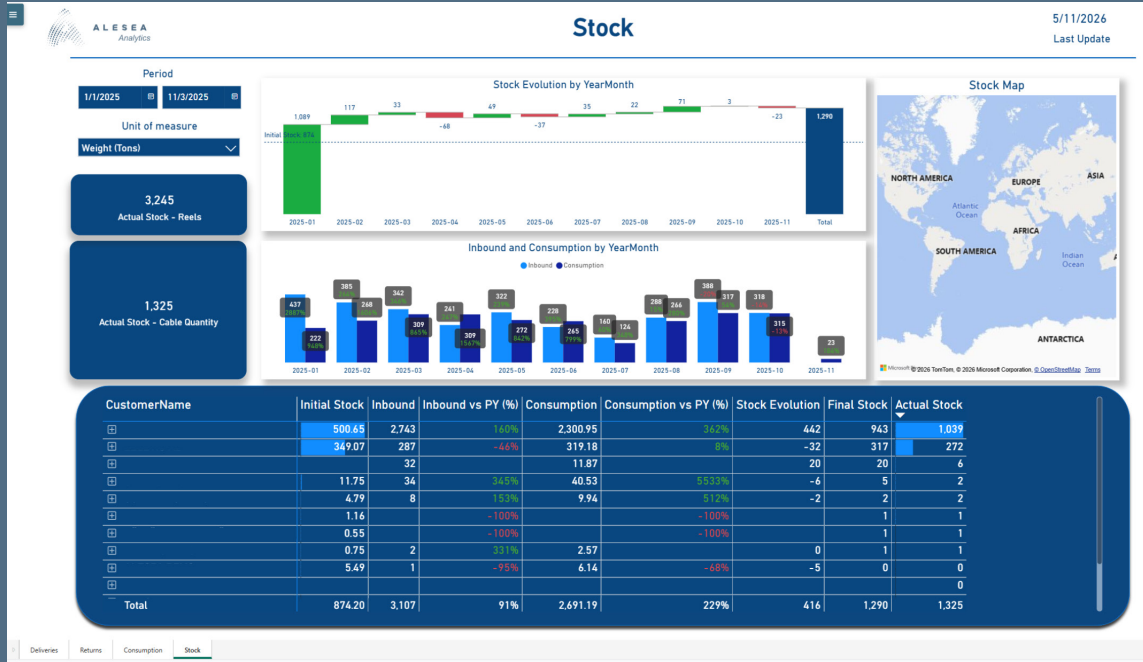
The '**return**' function in the bottom of the page provides the same possibilities of change, and also serves a great tool to provide a general overview.



The '**consumption**' function provides the same possibilities of change as the two prior functions. You can also make more targeted search within the BI Analytics via filters provided to the right of the map.



The '**stock**' function also has the same possibilities of change as the three prior functions. This function will provide a detailed overview of your stock. Both regarding inbound stock and stock consumption.



Alesea premium solutions

Business Intelligence Packages

Extended+ BI package

The Extended+ Package is built around your business. We design custom dashboards, KPI frameworks, and reporting environments tailored to your specific projects, compliance requirements, and strategic goals. Integrate Alesea data with your existing systems through our APIs, automate governance-ready reports, and unlock advanced analytics across extended datasets. This package scales with the complexity of your operations and evolves as your needs grow.

What you get:

- Customer-specific dashboards and KPI frameworks designed for your organization
- Advanced analytics with extended datasets tailored to your operations
- Cross-system integrations powered by Alesea APIs
- Automated, governance-ready reporting for compliance and audit requirements

The Extended+ Package is delivered through dedicated consulting engagements and tailored agreements, ensuring your analytics environment is designed to fit your business rather than forcing your business to adapt.





A L E S E A

About us



Contact information

Corso di Porta Romana - 20122
Milano (MI), Italy

support@alesea.com | 0291090563

2026 Alesea Srl - P.iva :

10964930969 - R.E.A di Milano n.MI
- 2569285