

PRYSMIAN DATA CENTRE SOLUTIONS

Everything you need from the world
leader in telecom and energy innovation



ACCELERATING GROWTH

As the world leader in cable manufacturing, Prysmian believes in the effective, efficient and sustainable supply of energy and information as a primary driver in the development of communities. We stand apart in our ability to deliver end-to-end solutions for both energy transmission and telecom networks, and provide major global organisations in multiple industries with best-in-class products and services based on state-of-the-art technology.

The challenges and opportunities before us demand that we harness the power of human ingenuity to drive new forms of energy and information to each and every corner of the earth – and faster than ever.

With deep expertise, relentless innovation, and global reach, Prysmian delivers energy and data wherever it's needed. Our advanced cable technologies are driving the future of electrification and digitalisation, powering the circular economy, and strengthening grid resilience. We help you stay focused on what matters most, wherever you operate.

Together, we can lead the way towards a brighter, smarter, more sustainable future for people, communities, and businesses.

Together, we will accelerate growth.

SUSTAINABILITY & LOCAL REGULATIONS

Data centres are placing an increased emphasis on sustainability and energy efficiency as key pillars of their design and operations. With growing environmental concerns and the rising energy demand of these facilities, the focus is shifting toward minimising carbon emissions and optimising resource consumption.

To improve sustainability, data centres are adopting innovative strategies such as employing renewable energy sources like solar and wind power, implementing advanced cooling technologies (liquid cooling), and optimising server efficiency.

As the world's largest cable solutions provider leading the energy transition and digital transformation, Prysmian is uniquely positioned to assist developers and operators in meeting the specific demands of modern data centres. We are facilitating their exponential growth by enhancing their infrastructure, improving efficiency and adopting sustainable practices – both locally and globally.

At Prysmian, we further sustainability in data centre construction by providing cabling solutions that help minimise environmental impact. We do this through the use of recycled raw materials and production with 100% renewable electricity, helping to minimise CO₂ emissions throughout the value chain.

ACCELERATING SUSTAINABILITY



GOVERNANCE



ENVIRONMENTAL



INNOVATION



SOCIAL



COMPREHENSIVE CABLE INFRASTRUCTURE FOR DATA CENTRES

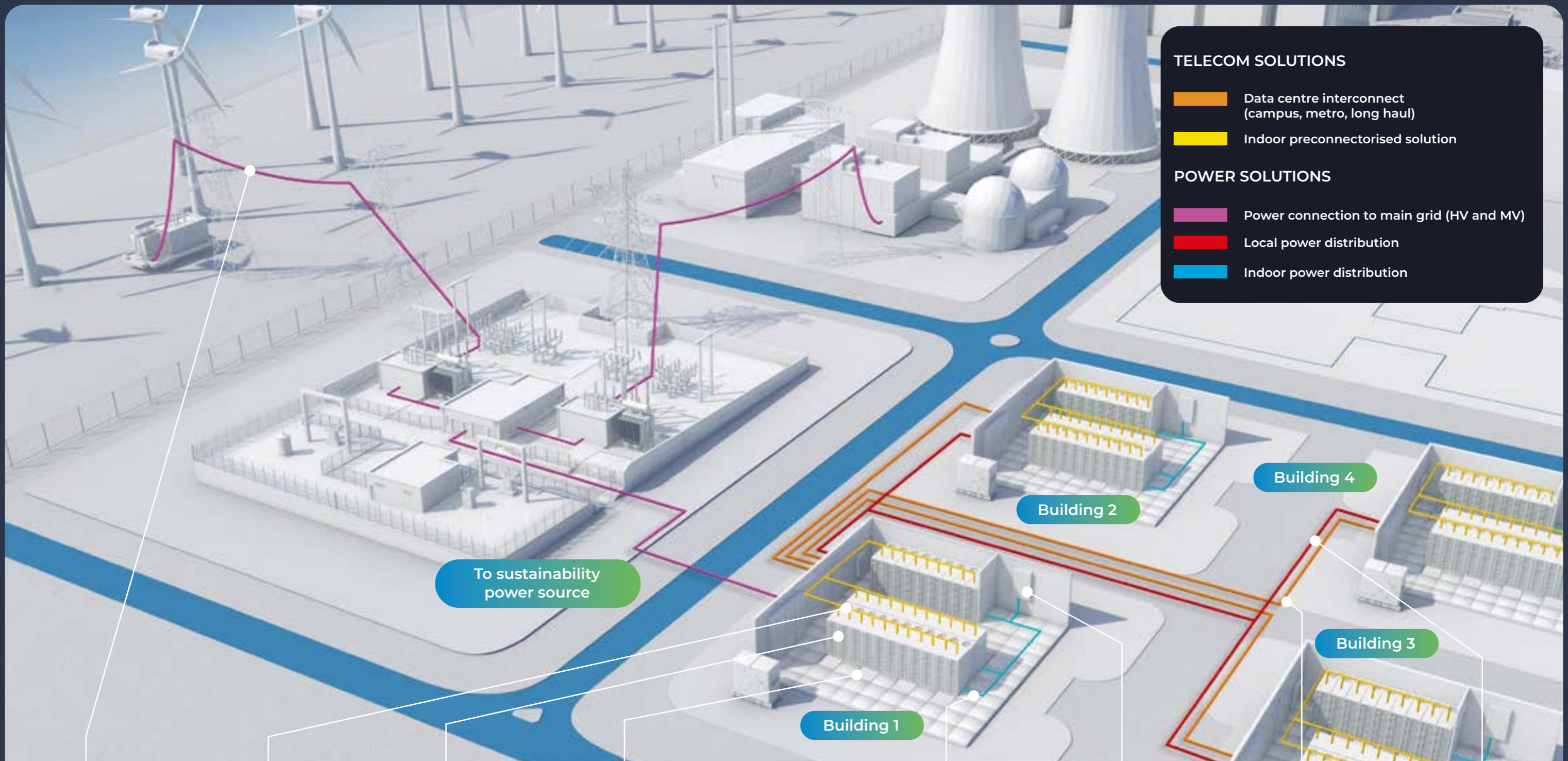
Speed, capacity, reliability.

The three essential performance requirements for data centres around the world: all delivered only with effective cable systems.

The rise of Artificial Intelligence (AI) and Machine Learning (ML) has transformed the way data centres operate. AI workloads demand unprecedented bandwidth, low latency, and energy efficiency.

Prysmian's advanced engineering and unique position spanning both energy and telecom cable solutions means we are ready to meet the demands of hyperscale and AI-optimised data centres, ensuring future-ready connectivity and power delivery.



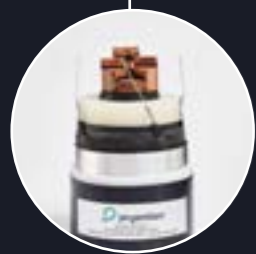


TELECOM SOLUTIONS

- Orange line: Data centre interconnect (campus, metro, long haul)
- Yellow line: Indoor preconnectorised solution

POWER SOLUTIONS

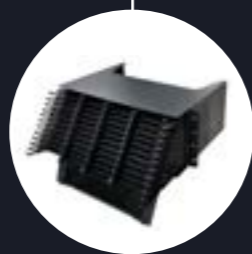
- Pink line: Power connection to main grid (HV and MV)
- Red line: Local power distribution
- Blue line: Indoor power distribution



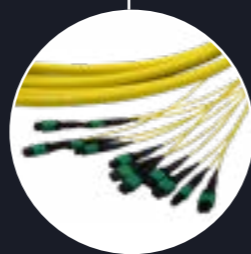
HV cable



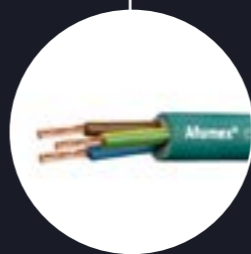
Preconnectorised UC connect



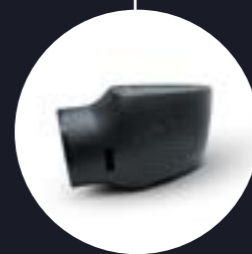
Pysmian's UHD distribution solution



Preterminated solutions



Pysmian energy LV



EOSS cable monitoring technology



High-density FlexRibbon™



Pysmian energy MV + EOSS

EVOLUTION OF DATA CENTRE INTERCONNECT



SIROCCO EXTREME

BendBright technology, 180µm
High-density cables for installation in microducts
Up to 864 fibres in 9.8mm



SIROCCO HD

BendBright technology, 200µm
High-density cables for installation in microducts
Up to 864 fibres in 11.0mm



MASSLINK™

BendBright technology
Ribbon construction, highest fibre count possible
Mass fusion splicing



MICRO FIBRE CABLE (MFC)

BendBright technology
Direct termination to MPO, SN-MT, MMC and EBO
Mass fusion splicing



PRYSMIAN'S HIGH-PERFORMANCE FIBRE OPTIC SOLUTIONS:

High-count fibre optic cables

Ensures seamless connections within data centre campuses, between cities, and for long-haul interconnectors.

Sirocco miniature air-blown cables

Offers record-breaking fibre density in minimal cable diameters, optimising existing duct infrastructure.

FlexRibbon

Combines high packing density with mass fusion splicing using bend-insensitive fibre.

BendBright bend-insensitive fibre

Features unprecedented micron diameters to allow smaller cables and higher fibre count in space-constrained environments.

50+ YEARS

After optimisation of the optical fibre and materials, and rigorous testing, Prysmian Sirocco cables now have an expected lifetime of 50+ years without compromise on performance during that time.

This enables operators to calculate the lifecycle analysis of their network over a much longer period of time.

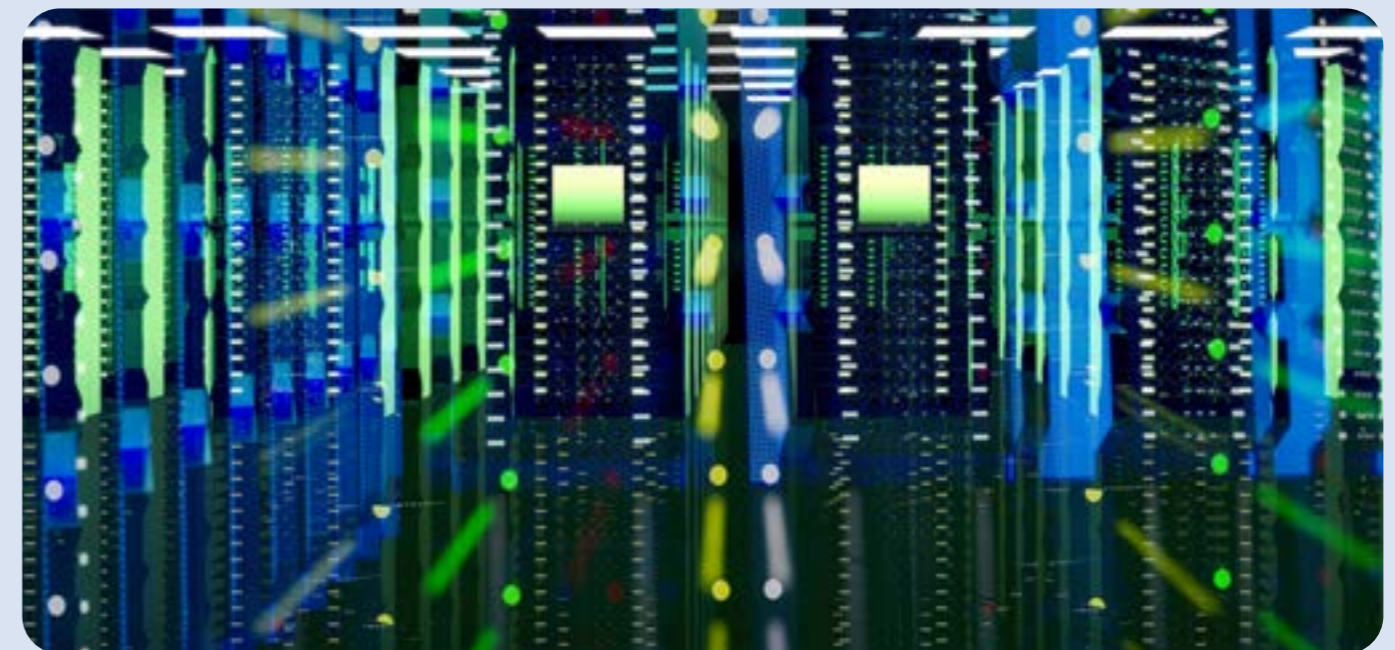


DATA CENTRE INTERNAL CONNECTION SOLUTIONS

This critical area of a data centre needs accurate cable management with optimal use of limited space.

Since its acquisition of Warren & Brown Technologies in 2024, Prysmian has been able to offer a comprehensive range of cable-management systems to complement our fibre optic cables. Combining the highest quality optical fibre technology with efficient cable management and all associated components allows customers to source a complete cable system from a single manufacturer.

A bespoke design service will provide detailed layouts and component lists for UL tested duct raceways within 72 hours.

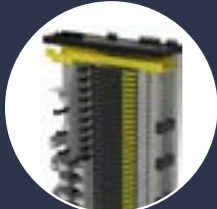


INTERNAL DATA CENTRE PORTFOLIO

Fibre solutions



Fibre raceway



ODF solutions



MPO/MTP® preterm

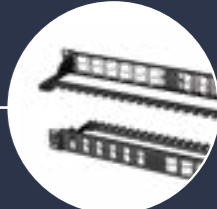


High-density fibre patching solution

Copper solutions



Category cables



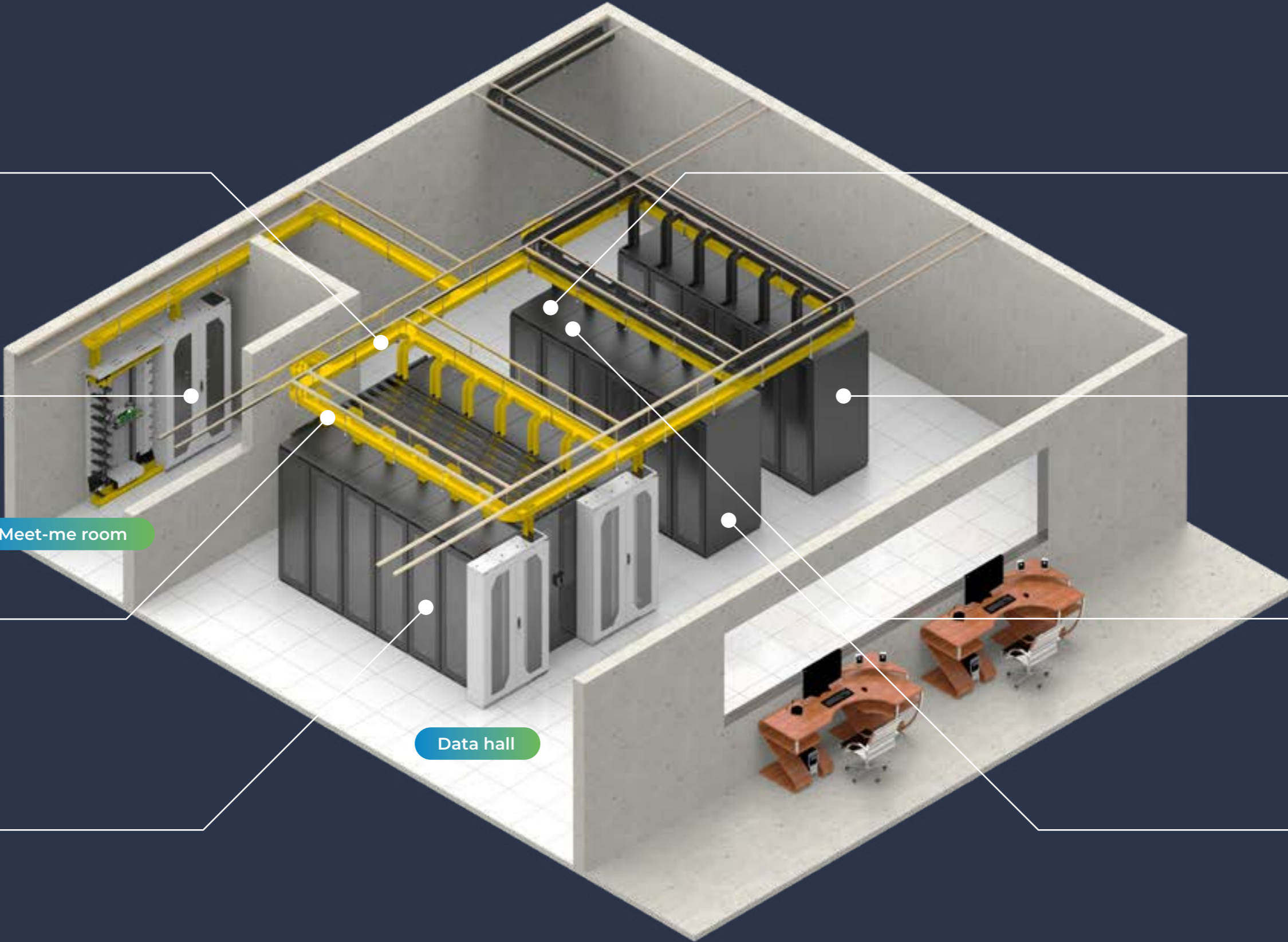
High-density copper patching solution



CAT6A preterm HD CAT6A cables

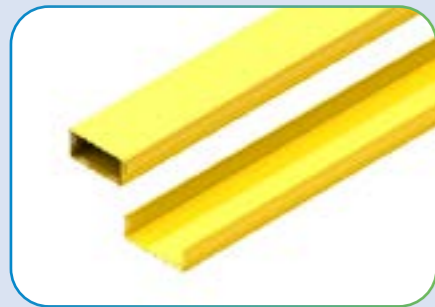


Cabinet solutions



OPTICAL FIBRE RACEWAY-DUCTING SOLUTIONS

Optical fibre patch cords transmit large data volumes but are easily damaged by heavy cabling. Traditional routing can compromise bend radii and cause downtime. Prysmian's ducting solutions protect fibres and ensure reliable network performance.



STRAIGHT DUCT



BREAKOUTS



REDUCERS



JOINERS



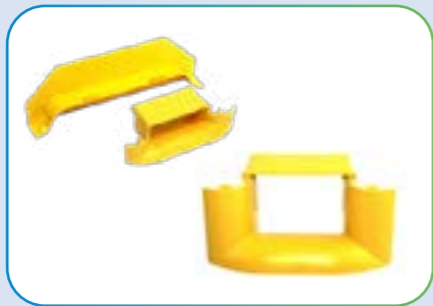
EXPRESS OUTLETS



FIBRE STORAGE LOOPS



TEES, ELBOWS & CROSSES



DROP-OFF SOLUTIONS



TUBING

MEET-ME ROOM SOLUTIONS

A meet-me room is a secure, shared space in a data centre where different network operators interconnect their infrastructure – a central hub for managing and routing high volumes of fibre connections. Prysmian's meet-me room solutions organise, protect, and optimise fibre pathways, ensuring efficient connectivity while minimising signal loss and downtime.

Sub-rack systems



Splice and patch

- Up to 144f
- 4 x 36f swing out trays per 1U
- Side or rear cable entry



Splice only or patch only

- Up to 144f per RU
- Modular approach utilises 1/4RU or 1/3RU blades



Mass fusion splice

- Up to: 864f (FlexRibbon) 384f (stranded fibre in 1U)
- 2-sided cable entry

Fibre management accessories



Fibre optic storage tray

- Slide out for ease of access
- LH and RH access
- Pre-fitted cable saddles



Cable slack management

- For both 600mm and 300mm ODF



310 Series ODF

- 5184 LC port capacity
- 19 x 2U sub-rack capacity
- 36 x 1U sub-rack capacity
- Integrated internal yellow ducting
- Offset cable slack management (max 4.1m)



Optical splice enclosure

- Splice enclosure
- 600mm wide
- 3840 single fibre splice

DATA HALL SOLUTIONS

Efficient use of whitespace boosts data centre performance and scalability. Prysmian's patch panels, multimedia systems, ultra-high-density systems and accessories streamline cabling, protect links, improve airflow, and meet ever-increasing bandwidth demands.

Patch panel



- LC, ST, SC
- Single & multimode
- Colour-coded adapters
- 6-way up to 96-way
- Supplied with all required accessories – splice cassettes, splice protectors, glands, warning label, earth-bonding kit, splice tray fibre-identification label, cage nuts
- Built to order

Multimedia system



- Available as LC-MPO, LC splice or RJ45
- Up to 120 LC ports in 1U
- Available in OM3, OM4 & OM5 as well as G657.A1 & G657.A2
- Up to 20 RJ45 ports using copper cassettes
- Compact size for installation inside shallow depth racks
- One-click latch technology for easy installation
- Front module access

Ultra-high-density system



- Ultra-high-density fibre panels (144f LC)
- Toolless technology
- Front and rear cassette loading
- Up to 24f per cassette
- Fully customisable sub-trays can accept base 8, 12, 16 or 24
- Factory tested preterminated cassettes
- 1U, 2U and 4U chassis



Preterminated trunk cables

- Utilising all of our UC Future Cable portfolio up to 3456 core
- Multiple fibre counts, designs up to 288 core, with multiple MTP® or MMC connector breakouts
- Base 8, 12, 16, 24 or 36 available
- Fully tested for attenuation loss as well as low insertion loss and back reflection on every connector
- Fully bespoke with short lead times
- 16f VSFF connector options available



Patching cords

- Full fibre optic pigtail and patch cord portfolio available including LC, SC, ST in OM1-5 and G657.A1 & G657.A2
- European manufactured and CPR-compliant patch cord range
- Simplex 1.6mm > 3.0mm up to B2ca
- Duplex in zipcord or flat-twin up to B2ca
- Duplex Uniboot in 2.0mm B2ca
- All manufactured using Prysmian-produced fibre
- Full factory testing



ODF FRAMES

The primary functions of the ODF are to provide managed fibre installation, reticulation, interconnection, distribution, and to allow for re-arrangement, and maintenance activities such as fibre testing and fault-finding at a common point.

This ODF offers versatility by accommodating a variety of *subrack types. Outdoor/external optical fibres undergo fusion splicing within the bottom half of the rack. The central fibre management system efficiently handles patch cords from these splice subracks, routing them to the patch/patch grooming subracks installed in the upper half of the rack before exiting.

Part number	Description
TC4050200ECX	Optical Distribution Frame (600x300x2200mm) w/ Central Fibre Management & Storage
TC4050-171DCKITME	Side Panels and Doors Kit for ODF
TC4050310EEC	Ultra High Density Optical Distribution Frame (1200x300x2200mm) w/integrated ducting
TC4050-170DCKITE	Side Panels and Doors for UHDODF (check PN includes panels)

SUBRACKS

This compact sub-rack delivers up to 96 or 144 LC fibre connections in just 1RU, using four independent ¼ RU trays for easy access during installation and maintenance.

Each tray manages coloured LC pigtails, splice storage and front-side patching, with smooth slide or pivot movement for fast service work. Patch cords enter from the side or rear and are secured with releasable brackets holding up to 24 cords per tray.

Available with left- or right-side cable routing, this solution combines high capacity with clean, user-friendly cable management.

Part number	Description
XEXSC03585	1U 96f LCUPC 7006 Splice & Patch Subrack, LHS Patch Cord Exit
XEXSC03586	1U 96f LCUPC 7006 Splice & Patch Subrack, RHS Patch Cord Exit
XEXSC03147	1U 96f LCUPC 7006 Splice & Patch Subrack, LHS Patch Cord Exit
XEXSC03148	1U 96f LCUPC 7006 Splice & Patch Subrack, RHS Patch Cord Exit
XEXSC03582	1U 144f LCUPC 7106 Splice & Patch Subrack, Left Hand Pivot
XEXSC03583	1U 144f LCUPC 7106 Splice & Patch Subrack, Left Hand Pivot

SUBRACKS

This compact 1RU solution is designed for high-capacity splicing, storage and organised fibre management. It is available with either two ½ RU trays for rollable ribbon fibres or four ¼ RU trays for stranded fibres, each tray sliding independently for easy, disturbance-free access during installation and maintenance.

The ½ RU trays support up to 432 fibres each (36 × 12-fibre ribbon splices), while the ¼ RU trays accommodate up to 96 splices each, delivering a total chassis capacity of 384 fibres. All trays incorporate six storage spools and dedicated LHS/RHS fibre channels that guide incoming fibres cleanly to their spools, ready for fusion splicing.

Central splice-protector clips secure and protect ribbon or single-fibre splice protectors, ensuring a tidy, safe and reliable splice environment within a compact 1RU footprint.

Part number	Description
XEXSC03580	1U 384f 7006 Splice Only Subrack for stranded fibre
XEXSC03581	1U 864f 7006 Splice Only Subrack for rollable ribbon fibre

Part number	Description
720632403L01041	1U 7206 Chassis, 4-blade capacity, front entry only
720632403B02041	1U 7206 Chassis, 4-blade capacity, front and rear fibre entry
814632403B02A	¼ Blade, 24F LC-IN, 24F LC-OUT Grade B, G657A2 Fibres, Patch Only
814632403B05	¼ Blade, 48F LC, 4x MTP Standard (Rear) Grade B, G657A2 Fibres, Patch Only
814632403L14	¼ Blade, 32F LC, 4x MTP Standard Grade B, G657A2 Fibres, Patch Only

PRE-TERMINATED TRUNKS

The range of MTP® Fibre Trunk and Breakout Cable Assemblies provide an optimised solution for the fast deployment of high-density backbone cabling in data centre and other high fibre count situations. MTP®/MPO connectors reduce the footprint of high-density installations whilst also improving the installation and reconfiguration time and cost. High quality simplex connections allow for the breakout of MTP connectors into single interfaces. Terminated with optimised physical contact connectors and manufactured with precision factory mounting and polishing techniques, they ensure the highest transmission quality.

Part number	Description
TR-001-K-12-S-CC-A	Prysmian G657.A2, 12 fibre, 12f MTP (unpinned) - 12f MTP (unpinned) Single Jacket Trunk Cable, Polarity A, 1m
TR-001-G-12-S-CC-A	Prysmian OM4, 12 fibre, 12f MTP (unpinned) - 12f MTP (unpinned) Single Jacket Trunk Cable, Polarity A, 1m
TR-001-K-24-S-CC-A	Prysmian G657.A2, 24 fibre, 2x12f MTP (unpinned) - 2x12f MTP (unpinned) Single Jacket Trunk Cable, Polarity A, 1m
TR-001-K-24-S-DD-A	Prysmian G657.A2, 24 fibre, 1x24f MTP (unpinned) - 1x24f MTP (unpinned) Single Jacket Trunk Cable, Polarity A, 1m

*All cable types are available at more metres upon order

High performance optical pigtails are a defining factor in ensuring any network performs to the highest level. Prysmian offers an extensive range of optical pigtails for use in FTTx, telecommunications, data communications and CATV applications. All pigtails are fully qualified to Telcordia GR326 and IEC61300 and all materials used are RoHS compliant.

Pigtails can be supplied in a variety of lengths, colours and with a variety of different connector types. The standard fibre type used is G657A1 for single mode pigtails, but different fibre types and cable diameters are also available on request.

Part number	Description
PIG-001-H-G-09-S-E	LC OM4 50/125 900um Pigtail 1m - Violet Cable / Violet Connector
PIG-001-H-K-09-S-D	LC G657.A2 9/125 900um Pigtail 1m - Yellow Cable / Blue Connector
PIG-001-J-K-09-S-D	LC/APC G657.A2 9/125 900um Pigtail 1m - Yellow Cable / Green Connector

High performance optical patch cords are a defining factor in ensuring any network performs to the highest level. Prysmian offers an extensive range of optical patch cords for use in FTTx, telecommunications, data communications and CATV applications. All patch cords are fully qualified to Telcordia GR326 and IEC 61300 and all materials used are RoHS compliant.

Patch cords can be supplied in a variety of lengths and with a variety of different connector types. Different fibre types and cable diameters are also available on request. Hybrid patch cords with different connector types on each end are also available. Please contact Prysmian for further information.

Part number	Description
PAT-01-HH-G-20-D-V	LC - LC Duplex 2.0mm 50/125 OM4 Patch Cord 1m - Violet Cable / Violet Connector
PAT-02-HH-G-20-D-V	LC - LC Duplex 2.0mm 50/125 OM4 Patch Cord 2m - Violet Cable / Violet Connector
PAT-03-HH-G-20-D-V	LC - LC Duplex 2.0mm 50/125 OM4 Patch Cord 3m - Violet Cable / Violet Connector
PAT-05-HH-G-20-D-V	LC - LC Duplex 2.0mm 50/125 OM4 Patch Cord 5m - Violet Cable / Violet Connector
PAT-10-HH-G-20-D-V	LC - LC Duplex 2.0mm 50/125 OM4 Patch Cord 10m - Violet Cable / Violet Connector
PAT-20-HH-G-20-D-V	LC - LC Duplex 2.0mm 50/125 OM4 Patch Cord 20m - Violet Cable / Violet Connector
PAT-30-HH-G-20-D-V	LC - LC Duplex 2.0mm 50/125 OM4 Patch Cord 30m - Violet Cable / Violet Connector
PAT-40-HH-G-20-D-V	LC - LC Duplex 2.0mm 50/125 OM4 Patch Cord 40m - Violet Cable / Violet Connector
PAT-50-HH-G-20-D-V	LC - LC Duplex 2.0mm 50/125 OM4 Patch Cord 50m - Violet Cable / Violet Connector

PIGTAILS & PATCH CORDS

Part number	Description
PAT-01-HH-K-20-D-Y	LC - LC Duplex 2.0mm 9/125 G657.A2 Patch Cord 1m - Yellow Cable / Blue Connector
PAT-02-HH-K-20-D-Y	LC - LC Duplex 2.0mm 9/125 G657.A2 Patch Cord 1m - Yellow Cable / Blue Connector
PAT-03-HH-K-20-D-Y	LC - LC Duplex 2.0mm 9/125 G657.A2 Patch Cord 1m - Yellow Cable / Blue Connector
PAT-05-HH-K-20-D-Y	LC - LC Duplex 2.0mm 9/125 G657.A2 Patch Cord 1m - Yellow Cable / Blue Connector
PAT-10-HH-K-20-D-Y	LC - LC Duplex 2.0mm 9/125 G657.A2 Patch Cord 1m - Yellow Cable / Blue Connector
PAT-20-HH-K-20-D-Y	LC - LC Duplex 2.0mm 9/125 G657.A2 Patch Cord 1m - Yellow Cable / Blue Connector
PAT-30-HH-K-20-D-Y	LC - LC Duplex 2.0mm 9/125 G657.A2 Patch Cord 1m - Yellow Cable / Blue Connector
PAT-40-HH-K-20-D-Y	LC - LC Duplex 2.0mm 9/125 G657.A2 Patch Cord 1m - Yellow Cable / Blue Connector
PAT-50-HH-K-20-D-Y	LC - LC Duplex 2.0mm 9/125 G657.A2 Patch Cord 1m - Yellow Cable / Blue Connector

Part number	Description
PAT-01-JJ-K-20-D-G	LC/APC - LC/APC Duplex 2.0mm 9/125 G657.A2 Patch Cord 1m - Yellow Cable / Green Connector
PAT-02-JJ-K-20-D-G	LC/APC - LC/APC Duplex 2.0mm 9/125 G657.A2 Patch Cord 2m - Yellow Cable / Green Connector
PAT-03-JJ-K-20-D-G	LC/APC - LC/APC Duplex 2.0mm 9/125 G657.A2 Patch Cord 3m - Yellow Cable / Green Connector
PAT-05-JJ-K-20-D-G	LC/APC - LC/APC Duplex 2.0mm 9/125 G657.A2 Patch Cord 5m - Yellow Cable / Green Connector
PAT-10-JJ-K-20-D-G	LC/APC - LC/APC Duplex 2.0mm 9/125 G657.A2 Patch Cord 10m - Yellow Cable / Green Connector
PAT-20-JJ-K-20-D-G	LC/APC - LC/APC Duplex 2.0mm 9/125 G657.A2 Patch Cord 20m - Yellow Cable / Green Connector
PAT-30-JJ-K-20-D-G	LC/APC - LC/APC Duplex 2.0mm 9/125 G657.A2 Patch Cord 30m - Yellow Cable / Green Connector
PAT-40-JJ-K-20-D-G	LC/APC - LC/APC Duplex 2.0mm 9/125 G657.A2 Patch Cord 40m - Yellow Cable / Green Connector
PAT-50-JJ-K-20-D-G	LC/APC - LC/APC Duplex 2.0mm 9/125 G657.A2 Patch Cord 50m - Yellow Cable / Green Connector

PIGTAILS AND PATCH CORDS

Part number	Description
PAT-01-HH-G-20-U-V	LC - LC Duplex 2.0mm Round Cable, Uniboot 50/125 OM4 Patch Cord 1m - Violet Cable / Violet Connector
PAT-02-HH-G-20-U-V	LC - LC Duplex 2.0mm Round Cable, Uniboot 50/125 OM4 Patch Cord 2m - Violet Cable / Violet Connector
PAT-03-HH-G-20-U-V	LC - LC Duplex 2.0mm Round Cable, Uniboot 50/125 OM4 Patch Cord 3m - Violet Cable / Violet Connector
PAT-05-HH-G-20-D-V	LC - LC Duplex 2.0mm Round Cable, Uniboot 50/125 OM4 Patch Cord 5m - Violet Cable / Violet Connector
PAT-10-HH-G-20-D-V	LC - LC Duplex 2.0mm Round Cable, Uniboot 50/125 OM4 Patch Cord 10m - Violet Cable / Violet Connector

Part number	Description
PAT-01-HH-K-20-U-Y	LC - LC Duplex 2.0mm Round Cable, Uniboot 9/125 G657.A2 Patch Cord 1m - Yellow Cable / Blue Connector
PAT-02-HH-K-20-U-Y	LC - LC Duplex 2.0mm Round Cable, Uniboot 9/125 G657.A2 Patch Cord 2m - Yellow Cable / Blue Connector
PAT-03-HH-K-20-U-Y	LC - LC Duplex 2.0mm Round Cable, Uniboot 9/125 G657.A2 Patch Cord 3m - Yellow Cable / Blue Connector
PAT-05-HH-K-20-U-Y	LC - LC Duplex 2.0mm Round Cable, Uniboot 9/125 G657.A2 Patch Cord 5m - Yellow Cable / Blue Connector
PAT-10-HH-K-20-U-Y	LC - LC Duplex 2.0mm Round Cable, Uniboot 9/125 G657.A2 Patch Cord 10m - Yellow Cable / Blue Connector

Part number	Description
PAT-01-JJ-K-20-U-G	LC/APC - LC/APC Duplex 2.0mm Round Cable, Uniboot 9/125 G657.A2 Patch Cord 1m - Yellow Cable / Green Connector
PAT-02-JJ-K-20-U-G	LC/APC - LC/APC Duplex 2.0mm Round Cable, Uniboot 9/125 G657.A2 Patch Cord 2m - Yellow Cable / Green Connector
PAT-03-JJ-K-20-U-G	LC/APC - LC/APC Duplex 2.0mm Round Cable, Uniboot 9/125 G657.A2 Patch Cord 3m - Yellow Cable / Green Connector
PAT-05-JJ-K-20-U-G	LC/APC - LC/APC Duplex 2.0mm Round Cable, Uniboot 9/125 G657.A2 Patch Cord 5m - Yellow Cable / Green Connector
PAT-10-JJ-K-20-U-G	LC/APC - LC/APC Duplex 2.0mm Round Cable, Uniboot 9/125 G657.A2 Patch Cord 10m - Yellow Cable / Green Connector

The Prysmian UC CP512 System, mountable in 19-inch racks (other options available) provides user-friendly and flexible connectivity when combined with cassettes, harnesses, trunks and patch cords. The simple design allows 5 cassettes per 1U or 12 cassettes per 2U to be loaded from either the front or rear with easy, fast and secure latching. It provides a flexible high-density system for managing fibre terminations, cabling and patching in data centre and LAN applications, optimising rack utilisation and minimising floor space.

Splice modules utilise a removeable front adaptor plate allowing splicing and connector loading to take place outside the module, simple fibre routing for ribbon and single fibre splices and cable entry for M20 or M12 glands or 10mm copex.

Part number	Description
CP512-1U	UC CP512 Cassette Chassis 1U/19" - 5 Positions
CP512-2U	UC CP512 Cassette Chassis 2U/19" - 12 Positions
CP512-1U-FCM	UC CP512 1U Front Cable Management Bar
CP512-RCM	UC CP512 Rear Cable Management Bar
CP512-Blank	UC CP512 Blanking Cassette

Part number	Description
CP512-K-12-LU-A-A	UC CP512 Cassette - OS2 12 Fibre LC/UPC Blue - 1x12 MTP APC Male (pinned) Polarity A
CP512-K-24-LU-A-A	UC CP512 Cassette - OS2 24 Fibre LC/UPC Blue - 2x12 MTP APC Male (pinned) Polarity A
CP512-G-12-LU-A-A	UC CP512 Cassette - OM4 12 Fibre LC/UPC - 1x12 MTP/MPO UPC Male (pinned) Polarity A
CP512-G-24-LU-A-A	UC CP512 Cassette - OM4 24 Fibre LC/UPC - 2x12 MTP/MPO UPC Male (pinned) Polarity A
CP512-K-12-LU-A-A	UC CP512 Cassette - OS2 12 Fibre LC/UPC Blue - 1x12 MTP APC Male (pinned) Polarity A
CP512-K-24-LU-A-A	UC CP512 Cassette - OS2 24 Fibre LC/UPC Blue - 2x12 MTP APC Male (pinned) Polarity B
CP512-G-12-LU-A-A	UC CP512 Cassette - OM4 12 Fibre LC/UPC - 1x12 MTP/MPO UPC Male (pinned) Polarity B
CP512-G-24-LU-A-A	UC CP512 Cassette - OM4 24 Fibre LC/UPC - 2x12 MTP/MPO UPC Male (pinned) Polarity B

Part number	Description
CP512-K-12-LU-L-X	UC CP512 Cassette - OS2 12 Fibre LC UPC Blue Splice Module, Coloured Pigtails, 30mm Slim Splice Protectors, 1xM20 Gland
CP512-K-24-LU-L-X	UC CP512 Cassette - OS2 24 Fibre LC UPC Blue Splice Module, Coloured Pigtails, 30mm Slim Splice Protectors, 1xM20 Gland
CP512-G-12-LU-L-X	OM4 12 Fibre LC Erika Violet Splice Module, Coloured Pigtails, 30mm Slim Splice Protectors, 1xM20 Gland
CP512-G-24-LU-L-X	OM4 24 Fibre LC Erika Violet Splice Module, Coloured Pigtails, 30mm Slim Splice Protectors, 1xM20 Gland

The Hypafox Zslim sub-rack system offers a quick and effective patching / splicing solution with its innovative and slim design, allowing it to accommodate up to 144 fibre connections per 1RU.

This makes the sub-rack one of the most flexible on the market. The shelf can accommodate cassettes in base 8, 12, 16 or 24, as well as patch only options or splice & patch options for ribbon or stranded fibre.

This enclosure minimizes the amount of movement that occurs to the connected optical fibre cords, as the trays smoothly slide out and lock into three different staggered positions. This allows access to the connections with minimum disruption, ensuring a very high degree of protection for working services.

The sub-rack can also be supplied in 2RU and 4RU configurations

Part number	Description
HYP A-1U-12B	Hypafox Zslim 1RU Chassis - 12 Positions Base 12
HYP A-1U-24B	Hypafox Zslim 1RU Chassis - 6 Positions Base 24
HYP A-2U-12B	Hypafox Zslim 2RU Chassis - 24 Positions Base 12
HYP A-2U-24B	Hypafox Zslim 2RU Chassis - 12 Positions Base 24
HYP A-4U-12B	Hypafox Zslim 4RU Chassis - 48 Positions Base 12
HYP A-4U-24B	Hypafox Zslim 4RU Chassis - 24 Positions Base 24

Part number	Description
HYP A-K-08-LU-A-A	UC CP512 Cassette Chassis 1U/19" - 5 Positions
HYP A-K-12-LU-A-A	UC CP512 Cassette Chassis 2U/19" - 12 Positions
HYP A-K-24-LU-A-A	UC CP512 1U Front Cable Management Bar
HYP A-K-08-LA-A-A	UC CP512 Rear Cable Management Bar
HYP A-K-12-LA-A-A	UC CP512 Blanking Cassette
HYP A-K-24-LA-A-A	UC CP512 Cassette - OS2 12 Fibre LC/UPC Blue - 1x12 MTP APC Male (pinned) Polarity A
HYP A-G-08-LU-A-A	UC CP512 Cassette - OS2 24 Fibre LC/UPC Blue - 2x12 MTP APC Male (pinned) Polarity A
HYP A-G-12-LU-A-A	UC CP512 Cassette - OM4 12 Fibre LC/UPC - 1x12 MTP/MPO UPC Male (pinned) Polarity A
HYP A-G-24-LU-A-A	UC CP512 Cassette - OM4 24 Fibre LC/UPC - 2x12 MTP/MPO UPC Male (pinned) Polarity A
HYP A-K-12-LU-L-X	UC CP512 Cassette - OS2 12 Fibre LC/UPC Blue - 1x12 MTP APC Male (pinned) Polarity A
HYP A-K-24-LU-L-X	UC CP512 Cassette - OS2 24 Fibre LC/UPC Blue - 2x12 MTP APC Male (pinned) Polarity B
HYP A-K-12-LU-L-X	UC CP512 Cassette - OM4 12 Fibre LC/UPC - 1x12 MTP/MPO UPC Male (pinned) Polarity B
HYP A-K-24-LU-L-X	UC CP512 Cassette - OM4 24 Fibre LC/UPC - 2x12 MTP/MPO UPC Male (pinned) Polarity B
HYP A-X-12	UC CP512 Cassette - OS2 12 Fibre LC UPC Blue Splice Module, Coloured Pigtails, 30mm Slim Splice Protectors, 1xM20 Gland
HYP A-X-24	UC CP512 Cassette - OS2 24 Fibre LC UPC Blue Splice Module, Coloured Pigtails, 30mm Slim Splice Protectors, 1xM20 Gland

PATCH PANEL SP1000 PANELS

The Prysmian range of SP1000 patch panels have a sliding drawer mechanism, suitable for either direct termination or splicing of up to 96 fibres LC (48f SC and 24f ST) in 1U of rack space. Each panel is manufactured to a high-quality finish with no sharp edges to provide a strong and durable unit. The sliding tray is locked in place with two simple plastic latches, when fully extended the tray is designed to lower to 45° or move the sliding tray to the side and it will lock to lower only 10°. This provides the perfect working platform for simple installation or easy maintenance and access even after the panel is installed in the rack.

Each panel is pre-loaded with the required number of adaptors with splice cassette and all required accessories to complete the installation.

Part number	Description
YPPBP04074	UC SP1000 Panel 1U/19" LC Panel - 4 Way 2x S/m DX Blue adaptors, 1 x 24F Splice Tray
YPPBP04075	UC SP1000 Panel 1U/19" LC Panel - 8 Way 4x S/m DX Blue adaptors, 1 x 24F Splice Tray
YPPBP03285	UC SP1000 Panel 1U/19" LC Panel - 12 Way 6x S/m DX Blue adaptors, 1 x 24F Splice Tray
YPPBP03286	UC SP1000 Panel 1U/19" LC Panel - 24 Way 12x S/m DX Blue adaptors, 1 x 24F Splice Tray
YPPBP03287	UC SP1000 Panel 1U/19" LC Panel - 48 Way 24x S/m DX Blue adaptors, 2 x 24F Splice Tray
YPPBP03288	UC SP1000 Panel 1U/19" LC Panel - 96 Way 24x S/m Quad Blue adaptors, 4 x 24F Splice Tray
YPPBP04171	UC SP1000 Panel 1U/19" LC/APC Panel - 4 Way 2x S/m DX APC Green adaptors, 1 x 24F Splice Tray
YPPBP04170	UC SP1000 Panel 1U/19" LC/APC Panel - 8 Way 4x S/m DX APC Green adaptors, 1 x 24F Splice Tray
YPPBP04169	UC SP1000 Panel 1U/19" LC/APC Panel - 12 Way 6x S/m DX APC Green adaptors, 1 x 24F Splice Tray
YPPBP03289	UC SP1000 Panel 1U/19" LC/APC Panel - 24 Way 12x S/m DX APC Green adaptors, 1 x 24F Splice Tray
YPPBP03290	UC SP1000 Panel 1U/19" LC/APC Panel - 96 Way 24x S/m Quad APC Green adaptors, 4 x 24F Splice Tray
YPPBP03885	UC SP1000 Panel 1U/19" LC/APC Panel - 96 Way 24x S/m Quad APC Green adaptors, 4 x 24F Splice Tray

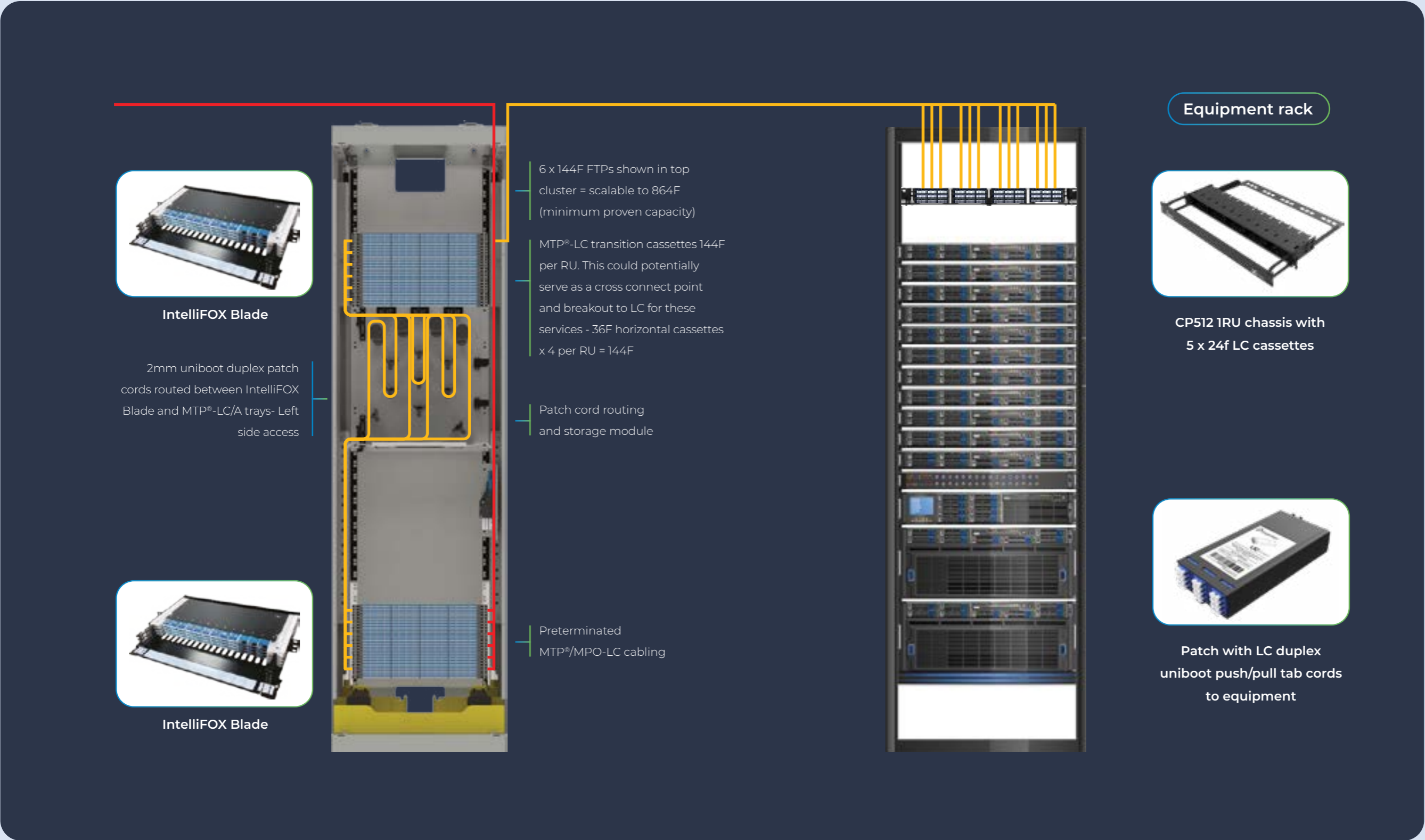
Part number	Description
YOASC04285	Draka Duplex LC Fibre Adaptor with flange and ceramic sleeves- Blue
YOASC04286	Draka Quad LC Fibre Adaptor with flange and ceramic sleeves - Blue
YOASC04287	Draka Duplex LC Fibre Adaptor with flange and ceramic sleeves - Beige
YOASC04288	Draka Quad LC Fibre Adaptor with flange and ceramic sleeves - Beige

PATCH PANEL SP1000

Part number	Description
YPPBP04076	UC SP1000 Panel 1U/19" LC Panel - 4 Way 2x M/m DX Beige adaptors, 1 x 24F Splice Tray
YPPBP04077	UC SP1000 Panel 1U/19" LC Panel - 8 Way 4x M/m DX Beige adaptors, 1 x 24F Splice Tray
YPPBP03291	UC SP1000 Panel 1U/19" LC Panel - 12 Way 6x M/m DX Beige adaptors, 1 x 24F Splice Tray
YPPBP03292	UC SP1000 Panel 1U/19" LC Panel - 24 Way 12x M/m DX Beige adaptors, 1 x 24F Splice Tray
YPPBP03293	UC SP1000 Panel 1U/19" LC Panel - 48 Way 24x M/m DX Beige adaptors, 2 x 24F Splice Tray
YPPBP03294	UC SP1000 Panel 1U/19" LC Panel - 96 Way 24x M/m Quad Beige adaptors, 4 x 24F Splice Tray
YPPBP04158	UC SP1000 Panel 1U/19" LC Panel - 4 Way 2x M/m DX OM3 Aqua adaptors, 1 x 24F Splice Tray
YPPBP04159	UC SP1000 Panel 1U/19" LC Panel - 8 Way 4x M/m DX OM3 Aqua adaptors, 1 x 24F Splice Tray
YPPBP03295	UC SP1000 Panel 1U/19" LC Panel - 12 Way 6x M/m DX OM3 Aqua adaptors, 1 x 24F Splice Tray
YPPBP03296	UC SP1000 Panel 1U/19" LC Panel - 24 Way 12x M/m DX OM3 Aqua adaptors, 1 x 24F Splice Tray
YPPBP03297	UC SP1000 Panel 1U/19" LC Panel - 48 Way 24x M/m DX OM3 Aqua adaptors, 2 x 24F Splice Tray
YPPBP03298	UC SP1000 Panel 1U/19" LC Panel - 96 Way 24x M/m Quad OM3 Aqua adaptors, 4 x 24F Splice Tray
YPPBP04160	UC SP1000 Panel 1U/19" LC Panel - 4 Way 2x M/m DX OM4 Erika Violet adaptors, 1 x 24F Splice Tray
YPPBP04161	UC SP1000 Panel 1U/19" LC Panel - 8 Way 4x M/m DX OM4 Erika Violet adaptors, 1 x 24F Splice Tray
YPPBP03299	UC SP1000 Panel 1U/19" LC Panel - 12 Way 6x M/m DX OM4 Erica Violet adaptors, 1 x 24F Splice Tray
YPPBP03300	UC SP1000 Panel 1U/19" LC Panel - 24 Way 12x M/m DX OM4 Erica Violet adaptors, 1 x 24F Splice Tray
YPPBP03301	UC SP1000 Panel 1U/19" LC Panel - 48 Way 24x M/m DX OM4 Erica Violet adaptors, 2 x 24F Splice Tray
YPPBP03302	UC SP1000 Panel 1U/19" LC Panel - 96 Way 24x M/m Quad OM4 Erica Violet adaptors, 4 x 24F Splice Tray
YPPBP03339	UC SP1000 Panel 1U/19" LC Panel - 12 Way 6x M/m DX OM5 Lime Green adaptors, 1 x 24F Splice Tray
YPPBP03340	UC SP1000 Panel 1U/19" LC Panel - 24 Way 12x M/m DX OM5 Lime Green adaptors, 1 x 24F Splice Tray
YPPBP03341	UC SP1000 Panel 1U/19" LC Panel - 48 Way 24x M/m DX OM5 Lime Green adaptors, 2 x 24F Splice Tray
YPPBP03356	UC SP1000 Panel 1U/19" LC Panel - 96 Way 24x M/m Quad OM5 Lime Green adaptors, 4 x 24F Splice Tray

CROSS CONNECT

MEDIUM DENSITY (UP TO 432F LC)



CROSS CONNECT

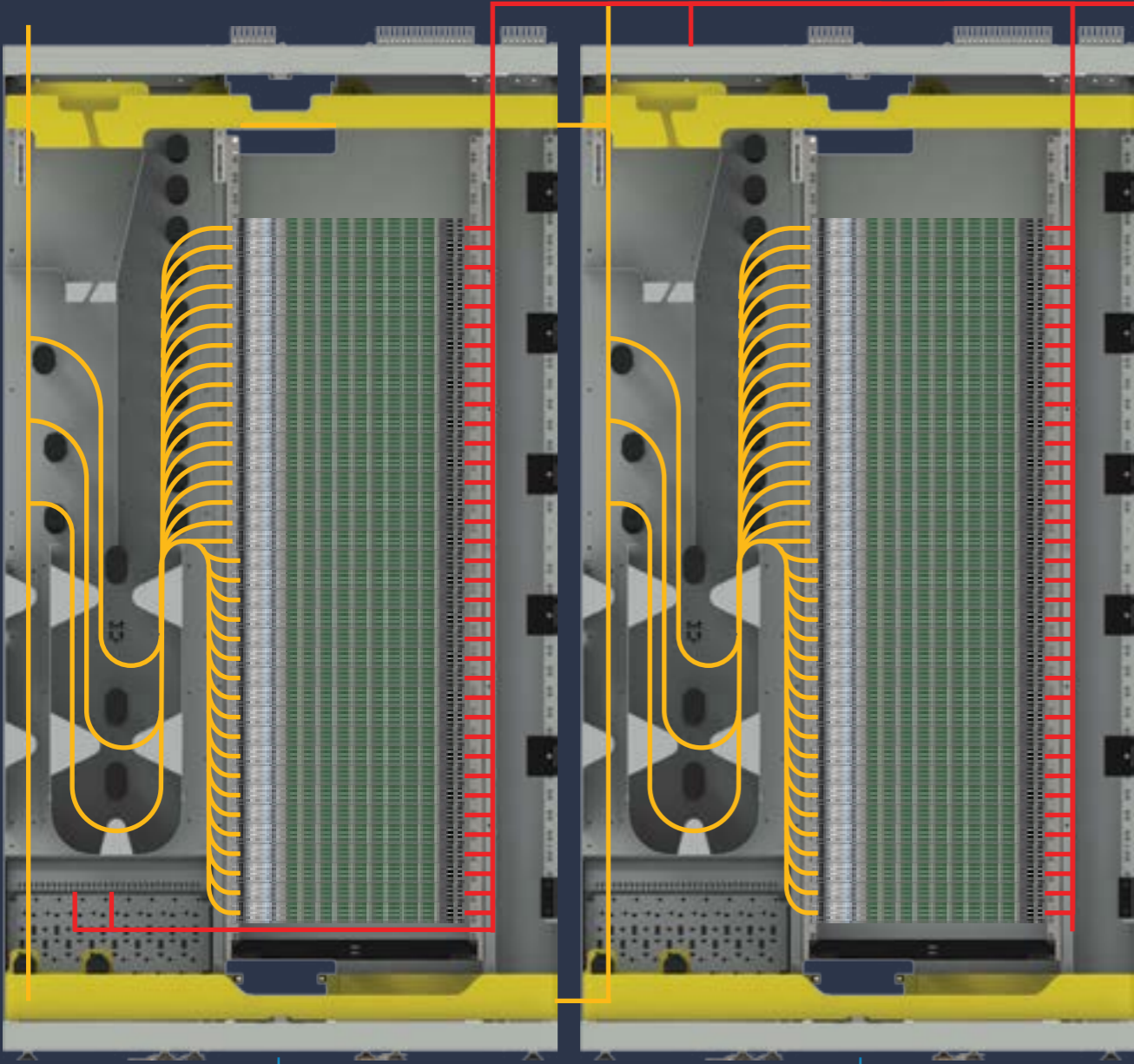
ALL THE WAY UP TO ULTRA HIGH DENSITY (5,184LC)

ODF 1


LC duplex patchcords
between ODF 1 & 2


ODF 2

MTP®/A 144F trunks
Female - female polarity A.
Haul sock one end




Equipment rack







CP512 1RU chassis with
5 x 24f LC cassettes




Patch with LC duplex
uniboot push/pull tab cords
to equipment




IntelliFOX Blade
1 RU modular chassis with 4 x 36F
LC/A-MTP® cassettes (144F)



36 x scalable 1RU 144F FTP's (4 x 36F
cassettes) Total port density of 5,184
LC/A fibres 144F per RU deployment



IntelliFOX Blade
1 RU modular chassis with 4 x 36F
LC/A-MTP® cassettes (144F)



36 x scalable 1RU 144F FTP's (4 x 36F
cassettes) Total port density of 5,184
LC/A fibres 144F per RU deployment



Prysmian

Contact us:

Ole Petter Jakobsen - Sales Representative Telecom
olepetter.jakobsen@prysmian.com

Tuomas Kortelahti - Mobile Networks Sales Manager
Tuomas.Kortelahti@prysmian.com

Filip Ladan - Data Centre specialist
filip.ladan@prysmian.com

Peter Björkman - Nordics Digital Solutions Director
peter.bjorkman@prysmian.com



www.prysmian.com

Follow us

